



# TRIO MIX GIGANT VERTIFEED

*self-loading feed mixer*

Trioliet. Invents for you.



# FARMER, TRACTOR, AND TRIOLIET SELF-LOADING TECHNOLOGY: THE BEST TRIO FOR YOUR FARM



*With self-loading feed mixers, you save time and diesel, and you no longer need a separate loading vehicle. Thanks to the advanced cutting-loading technology and the well-designed discharge system, these feed mixers ensure a fast and optimal feeding process. The silage is neatly cut to the ground, leaving a smooth pit face, which prevents water infiltration or spoilage. This preserves the quality of the feed without leaving leftovers. The feed structure remains intact, which has been proven to require less power than comparable silage cutting systems. Mixing starts immediately after loading, and within minutes, the feed is ready to be discharged out.*

## TRIOLIET GREEN LABEL

Trioliet's self-loading feed mixers contribute to a sustainable world with their cutting system and are provided with the Trioliet Green Label.





*The range of self-loading feed mixers consists of 16 different models, each with its own loading system. The capacity ranges from 5 m<sup>3</sup> to 22 m<sup>3</sup>. In this brochure, we will tell you everything about the Triomix, Triomix S, Gigant, and Vertifeed.*

Page 6	The Triomix and Triomix S
Page 10	Unique features of Triomix 1 and Triomix S1
Page 12	The Triomix 2 New Edition
Page 14	Unique features of Triomix 2 New Edition
Page 16	The Gigant
Page 18	Unique features of Gigant
Page 20	The Vertifeed
Page 22	Technical data and accessories

## SELF-LOADING FEED MIXERS



### ENJOYMENT FOR THE FARMER AND THE COW

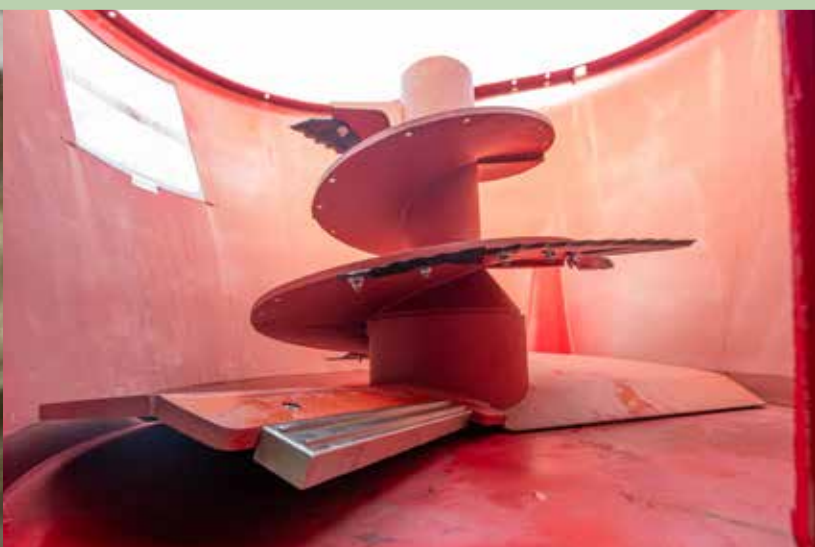
Thanks to the self-loading feed mixers, which use advanced cutting technology and an efficient discharge system, the feed is quickly and evenly prepared. The silage is neatly cut and kept clean from leftover feed. After loading, the feed is immediately mixed, so within minutes, the livestock gets fresh, aerated, TMR ration. These time-saving machines ensure that your livestock is constantly offered the same well mixed TMR, benefiting both the farmer and the cow.

*Scan the QR code, open the page and watch the instructional video 'How to optimise my feed mixer'.*





## THREE-IN-ONE MACHINE; LOADING, MIXING AND DISCHARGE WITH ONLY ONE MACHINE



*^ Auger Magnet Prevents Health Problems*

### BETTER CUTTING PERFORMANCE WITH LESS POWER

In Trioliet's self-loading feed mixers, the shape and size of the mixing auger and mixing tub are technically well designed. The unique Twin-Stream auger with two symmetrical discharge wings ensures even discharge. The strong patented auger knives are highly wear-resistant and optimally placed, resulting in perfect mixing and efficient cutting with less required power. This leads to significant fuel savings.

### MAGNET IN THE FEED MIXER PREVENTS HEALTH PROBLEMS

Every year, thousands of cows, goats, and sheep are injured or affected due to sharp objects in the feed they consume. This is a significant cost factor that can be easily and inexpensively prevented with magnets in the feed mixer.

### TRIOLIET OFFERS TWO DIFFERENT MAGNETS:

1. Auger magnets on the auger blade
2. Magnetic strip on the discharge chute  
at side discharge door



## CUTTING SYSTEM ENSURES FUEL SAVINGS

### DISCOVER THE SIMPLICITY OF THE TRIOMIX AND TRIOMIX S

The Triomix is the most complete self-loading feed mixer. This machine is robust, user-friendly, and fast. With one machine, you can cut, mix, and then offer freshly mixed TMR to your livestock from a pit height of up to 4 meters. The U-shaped cutting system with active knives or fixed knives neatly cuts the feed without spilling.

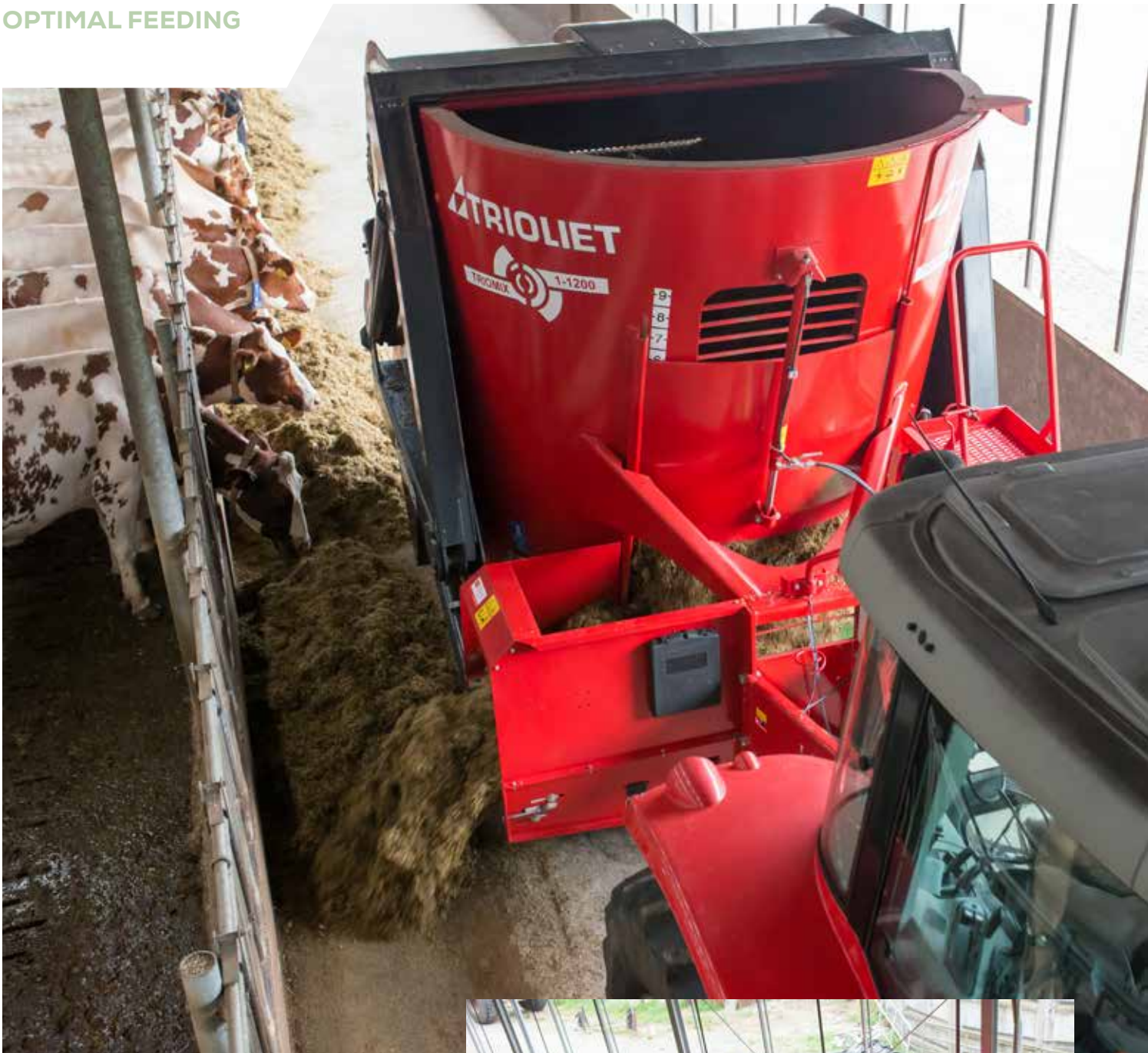


### LIGHT AND HOMOGENEOUS TMR EFFICIENTLY MIXED

The cut feed is loaded into the mixing chamber with one movement, where the Twin-Stream mixing auger ensures optimal mixing and quick, even discharge. After less than ten minutes of mixing time, the result is light and homogeneous TMR, ready for distribution via the front cross conveyor.



## OPTIMAL FEEDING



## THE RIGHT CHOICE FOR EVERY FARMER

Trioliet offers a wide range of self-loading feed mixers, such as the Triomix 1 and Triomix S1 (8, 10, and 12 m<sup>3</sup>) and the Triomix 2 and Triomix S2 New Edition (14, 18, and 22 m<sup>3</sup>). Every Triomix is fully equipped with features like electric controls and a sealing brush on the loading ramp, and can be extended with accessories such as a weighing system, hydraulic jack and speed control for the cross conveyor belt.

# SMOOTH, TIGHT PIT AND PRESERVATION OF FEED STRUCTURE



*^Thanks to the cutting system, always smooth and tight silage facing, minimal feed loss and preservation of feed structure.*

## TRIOMIX S WITH FIXED KNIFE

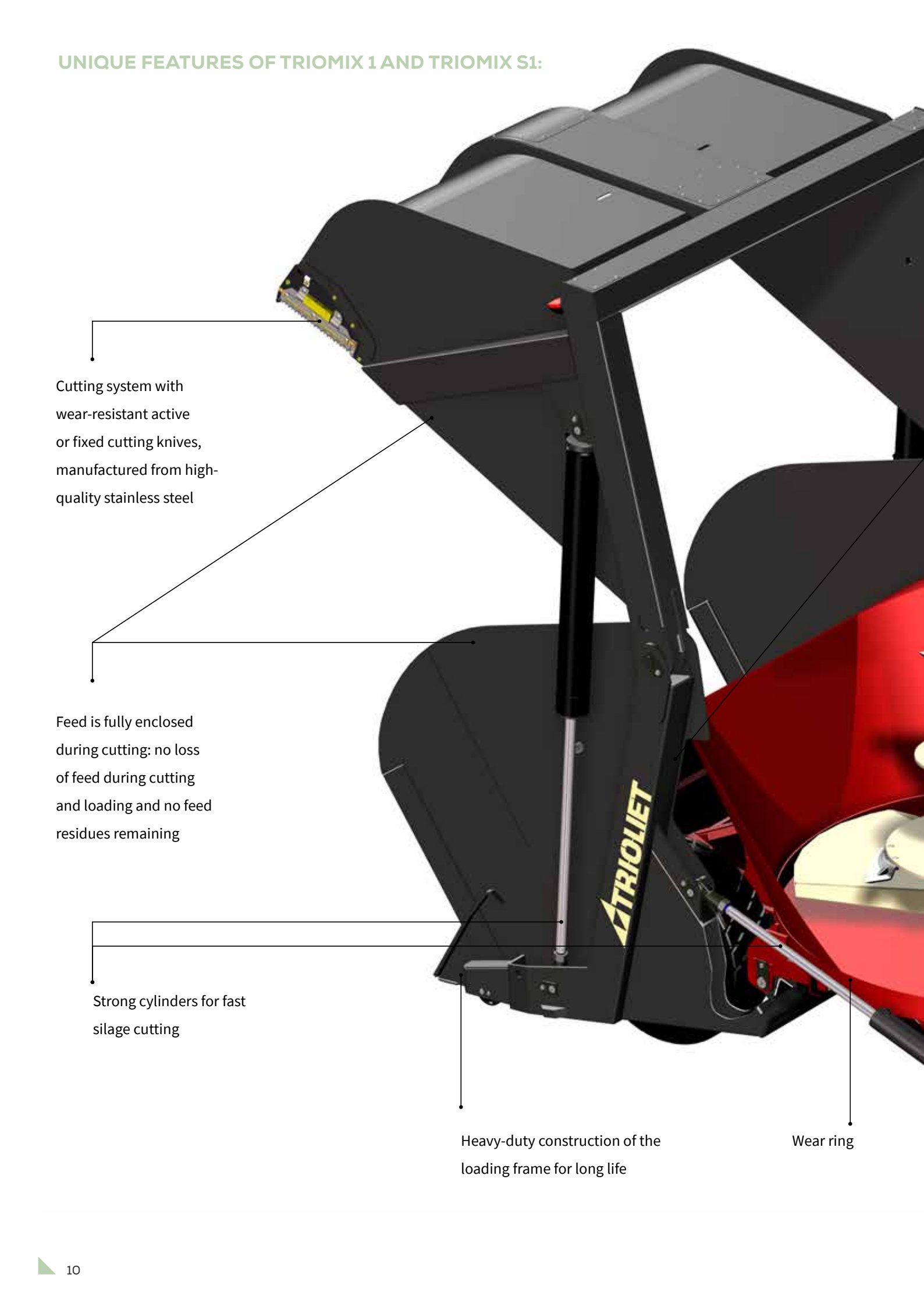
For farmers who prefer a fixed knife for cutting, the Triomix S is an excellent option. The Triomix S1 has a cross conveyor at the front while the Triomix 2 New Edition can be equipped with cross conveyor belt at the front, at the rear or with two side discharge doors at the front. The Triomix S can be expanded with several options, such as reduction gearbox, hydraulic counter-knife, auger magnet and adjustable conveyor belt on the right for discharging into feed troughs.



*Scan the QR code,  
open the page and  
watch the video of  
the Triomix S*



## UNIQUE FEATURES OF TRIOMIX 1 AND TRIOMIX S1:



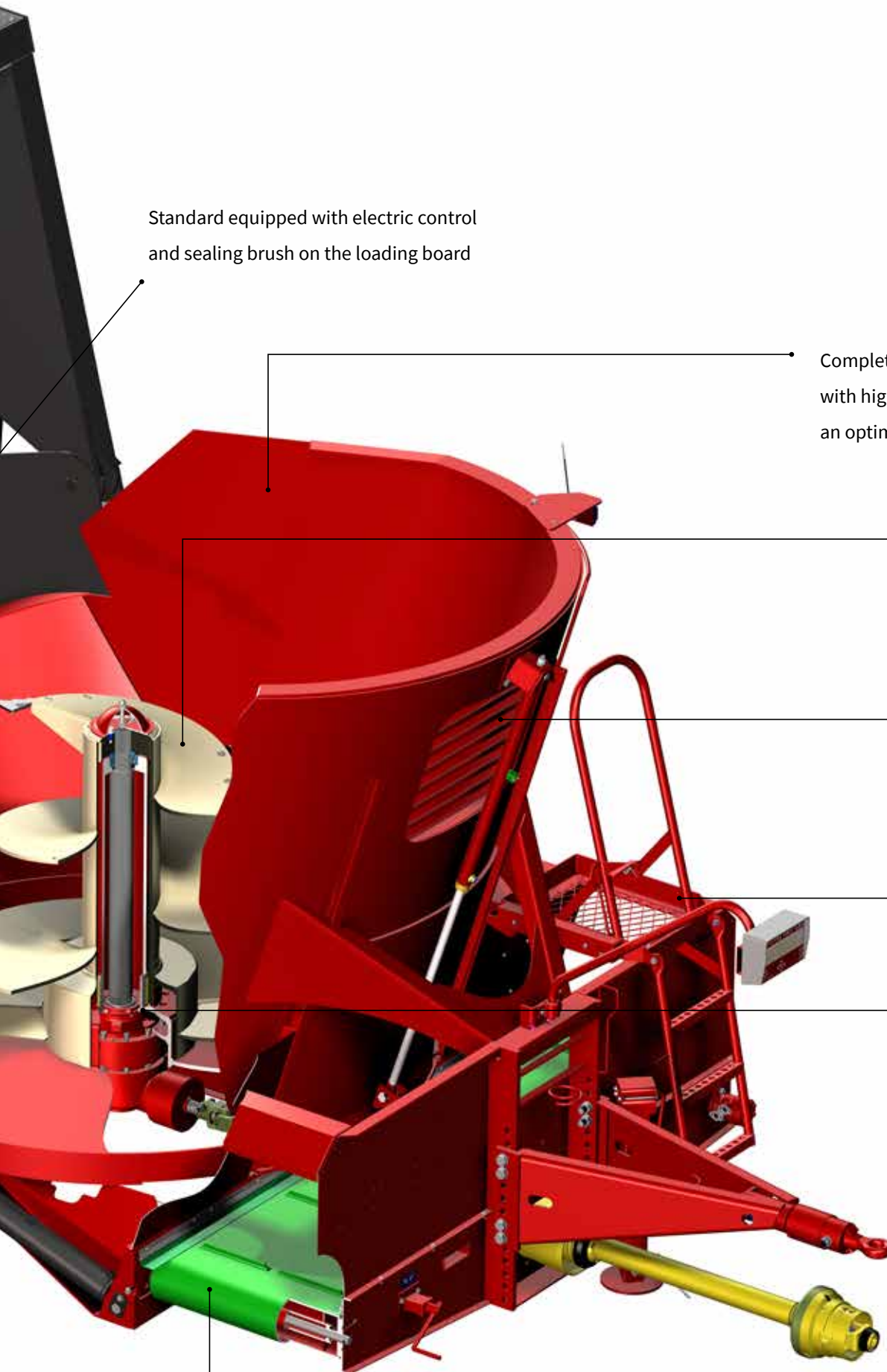
Cutting system with wear-resistant active or fixed cutting knives, manufactured from high-quality stainless steel

Feed is fully enclosed during cutting: no loss of feed during cutting and loading and no feed residues remaining

Strong cylinders for fast silage cutting

Heavy-duty construction of the loading frame for long life

Wear ring



Standard equipped with electric control and sealing brush on the loading board

Complete round mixing chamber with high filling height to ensure an optimal mixing process

Twin Stream Auger with Trioform Auger Knives

Large window for maximum visibility during cutting/ loading

Ladder with platform

Stable auger construction with top bearing

Cross conveyor belt for quick and even discharge

## TRIOMIX 2 NEW EDITION



These Triomix 2 machines combine efficient cutting-loading technology with an optimized mixing tub and quick discharge, resulting in an optimal feeding process. The machine prevents spoilage by leaving the silage wall neat and sealed. Available models are 1400, 1800, and 2200 (14, 18, and 22 m<sup>3</sup>), the Triomix 2 New Edition machines are suitable for all different farm conditions. For example, the compact 1400 New Edition is particularly suitable for narrow and low barns, while the larger types 1800 and 2200 meet the demand for more capacity.

# CUTTING HEIGHT UP TO 4 METRES, PERFECT MIXING AND DISCHARGE AT ALMOST EVERY SPOT

## MAIN FEATURES OF THE TRIOMIX 2 NEW EDITION:

- ✓ **Robust cutting-loading system:** Ensures lower maintenance costs and less wear. The loading system is available with both a fixed knife (Triomix S2) and the proven active cutting system (Triomix 2).
- ✓ **Efficient feed processing:** The shape of the mixing tub and the patented feed guidance between the augers improve feed circulation, resulting in a faster loading process and a quick, efficient mixing process.
- ✓ **High loading capacity and precision:** Thanks to a cutting height of up to 4 meters and a fully enclosed loading frame, spillage is prevented. The wide cross conveyor belt (1 meter) with a wide discharge door ensures fast and even dispensing, even for dry rations.
- ✓ **Energy-efficient technology:** Load Sensing control enables fast loading cycles and saves fuel. Safety and control: Standard equipped with a reverse camera, and optionally with a camera in the loading system for optimal visibility during silage cutting.
- ✓ **Flexible discharge options:** With side discharge doors (ZK) or a cross conveyor belt at the front or rear, the Triomix 2 New Edition is suitable for every barn situation.

## UNIQUE FEATURES OF TRIOMIX 2 NEW EDITION:

Robust cutting system with wear-resistant active or fixed knives. Silage cutting height up to 4 meter.

Feed is fully enclosed during cutting: no feed loss during cutting and loading, and no leftover feed at the silo

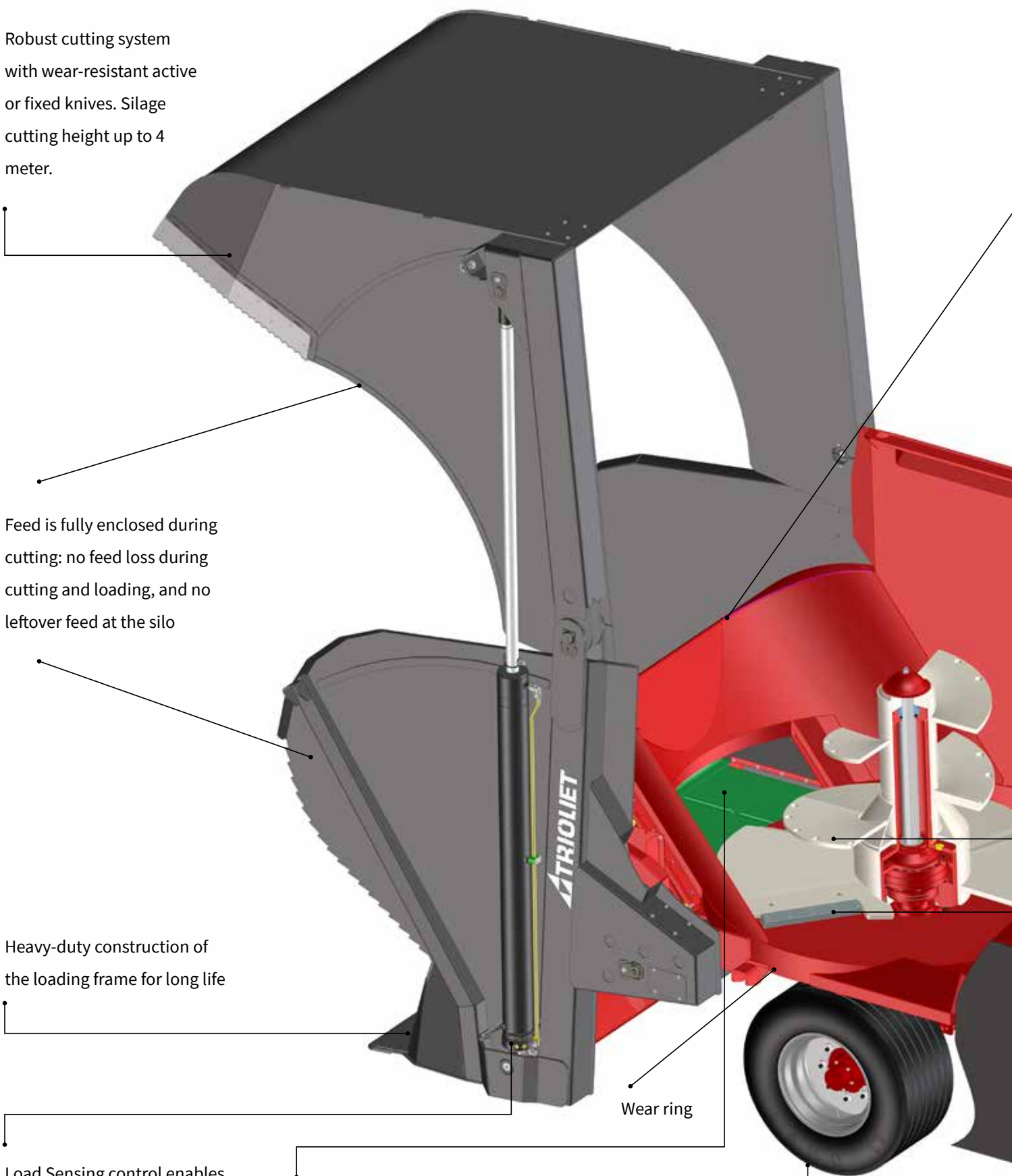
Heavy-duty construction of the loading frame for long life

Load Sensing control enables fast loading cycles and saves fuel

Multiple discharge options, such as a cross conveyor belt at the rear (AL) or at front (VL) for quick discharge in all barn situations.

Wear ring

Wheel axle with two robust single wheels (type 1400 and 1800) and a tandem axle with four wheels (type 2200)



Fully round mixing tub with high filling height for a fast and optimal mixing process. Standard equipped with electric control, sealing brush on the loading board, and a reverse camera

Dual Flow mixing principle due to patented inserts

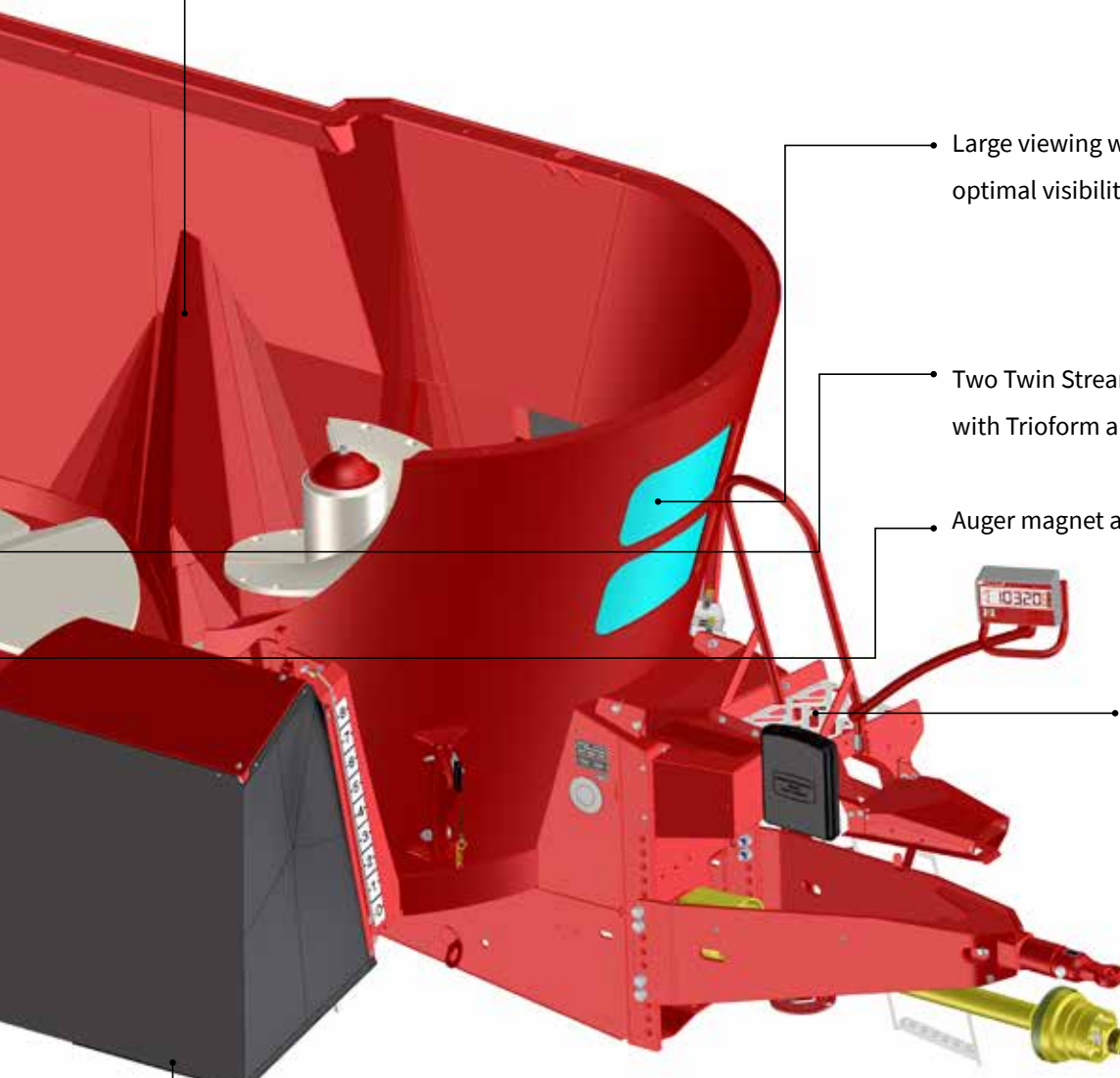
Large viewing window for optimal visibility during mixing

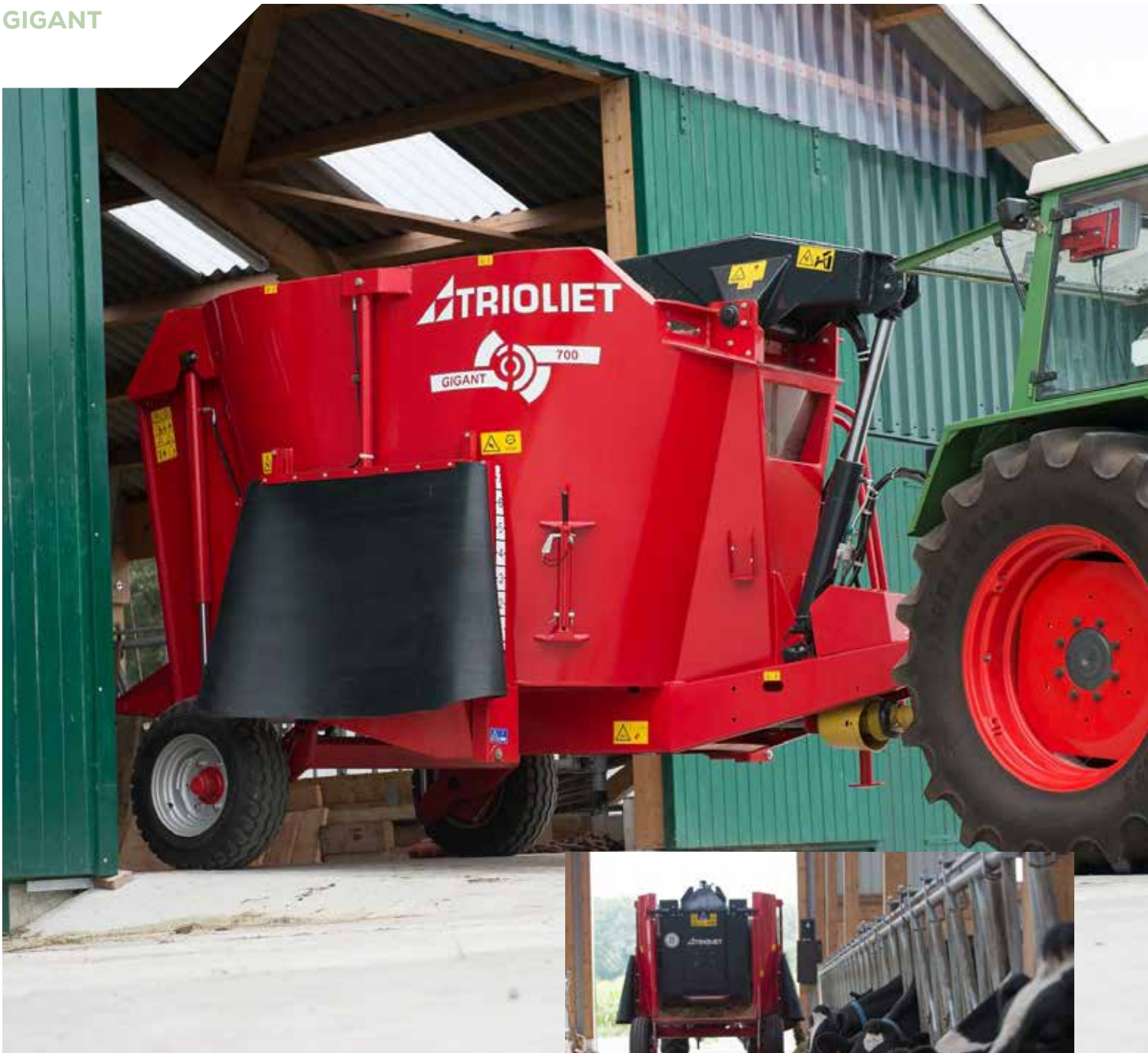
Two Twin Stream Life Long Life augers with Trioform auger knives.

Auger magnet available as an option

Ladder with platform

Flexible discharge options: ZK side discharge doors on the left and right at front





**DE GIGANT: MANEUVERABLE AND FLEXIBLE**

The flexible all-rounder in the range of self-loading feed mixers is the powerful and maneuverable Gigant. The machine's maneuverability is due to its very compact design and the placement of the wheels on the outsides of the tub. Almost every feeding location can be reached with this flexible self-loader. Its low height also makes the feed mixer ideal for barns with low head room and narrow passages. Its maneuverability and flexibility are a definite advantage in these cases.



*^ Camera in the cutting board is available as an option*



## ACCURATE LOADING, PERFECT MIXING, AND CLEAR DISCHARGE

A silage height of 3.8 meters is no problem for the Gigant, and with one cut, you can load 26 cubic meters of feed. This gives the machine enormous loading capacity in its class. The Gigant can be equipped with a cutting head or a fixed cutting head (on the Gigant 500), allowing both round and square bales to be cut. From the tractor, you have an excellent view and can set the discharge door to the desired amount accurately. The Gigant is a user-friendly machine that is easy to maintain, thanks to its standard electric control.

*Scan the QR code,  
open the page  
and watch the  
video of the Gigant*



## UNIQUE FEATURES OF GIGANT

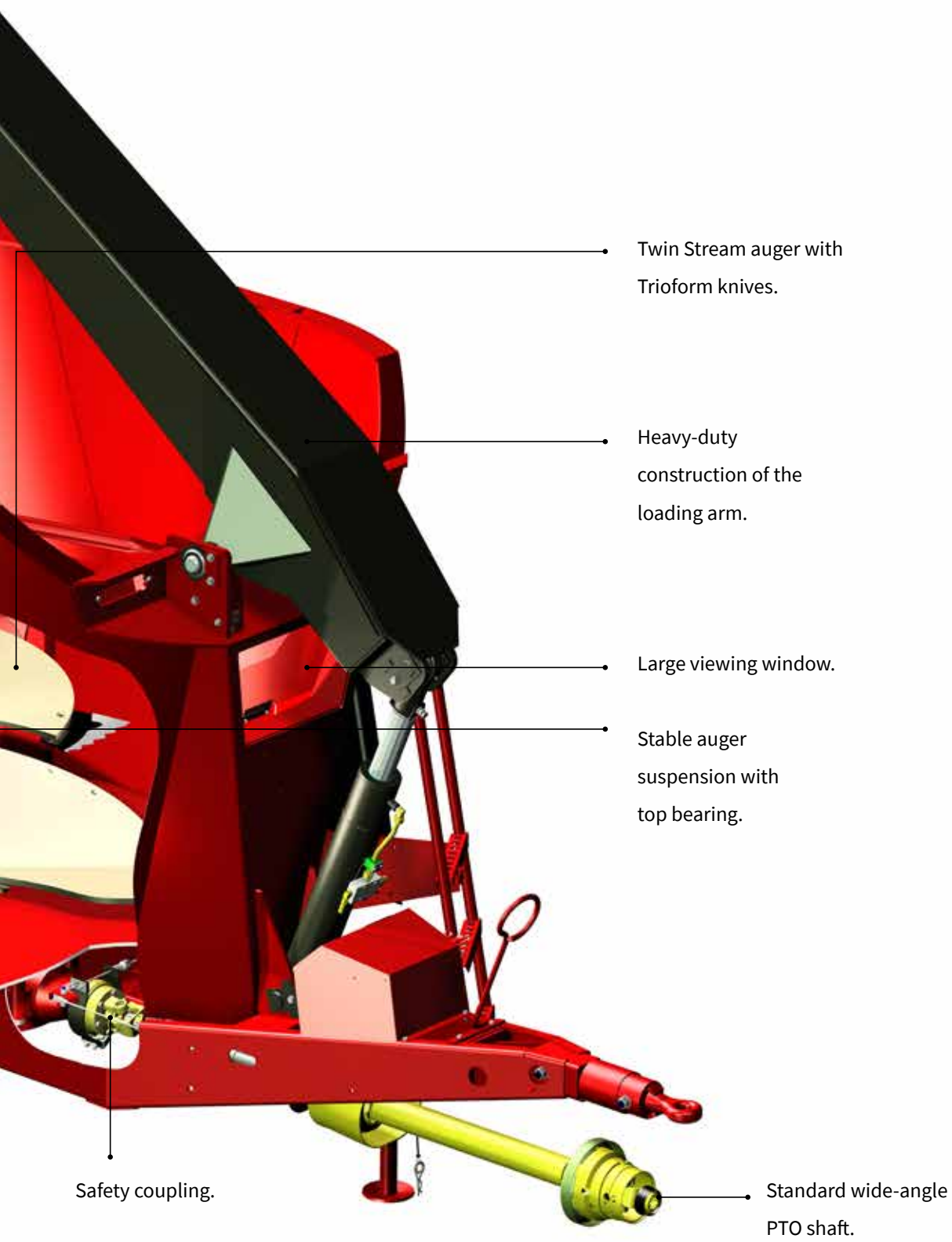


Cutting and loading system; a grab board with spring-loaded anti-spill plate is available as an option for the Gigant 500.



Robust wheels.

Automatically foldable discharge chute.



• Twin Stream auger with Trioform knives.

• Heavy-duty construction of the loading arm.

• Large viewing window.

• Stable auger suspension with top bearing.

• Safety coupling.

• Standard wide-angle PTO shaft.



**VERTIFEED: ROBUST FEED MIXER WITH LOADING FRAME**

For farmers who already have a silage cutter, the Vertifeed is a perfect addition. The Vertifeed is a heavy duty feed mixer with loading frame. This loading frame allows easy loading of square and round bales. While reversing, the loading frame slides under the silage. The silage is scooped up, and two cylinders lift the loading platform. The feed is then tipped into the mixing chamber. In the oval mixing chamber, the Twin Stream auger ensures perfect mixing while preserving the feed structure. The variable position of the discharge door allows the exact amount of feed to be discharged.



The Vertifeed can be expanded with several options.



## AN INVESTMENT THAT PAYS OFF

### THE RIGHT CHOICE

With self-loading feed mixers, you save time and diesel, and you no longer need a separate loading vehicle. In terms of price-quality ratio, Trioliet's self-loading feed mixers are absolutely the right choice. The robustness of the machines, combined with their high quality, gives them a longer lifespan. Operating costs are lower, and you can save the purchase of an additional loading vehicle.

## TECHNICAL SPECIFICATIONS



# TRIOMIX 1

### STANDARD FEATURES

- U-shaped cutting-loading system with hydraulically driven cutting knives
- 1 vertical Twin Stream mixing auger
- Trioform auger knives
- One restrictor blade
- Wear ring
- Wide-angle PTO shaft
- Adjustable and reversible drawbar for upper or lower hitch
- Cross conveyor belt at the front
- Sealing brush at loading board
- Two single (wide) wheels
- Electric operation
- Hydraulic brakes
- Platform with stairs and viewing window

### OPTIONS

- Electronic weighing system
- Reduction gearbox
- Hydraulic restrictor blade
- Hydraulic jack
- Lighting (LED)
- Speed regulation for cross conveyor belt
- Pneumatic brakes
- Long Life mixing auger
- Adjustable conveyor belt for cross conveyor (right)
- Magnet on auger wing

### TECHNICAL SPECIFICATIONS TRIOMIX 1

TYPE	800	1000	1200
Discharge		Cross conveyor belt at the front	
Capacity m <sup>3</sup>	8,00	10,00	12,00
Length m	4,98	5,16	5,16
Width m	2,41	2,61	2,61
Height m	2,81	2,82	3,02
Minimum clearance height m	2,66	2,66	2,95
Maximum cutting height m	3,15	3,15	3,60
Width outside wheels m	1,97	1,99	1,99
Width of cutting frame m	2,04	2,24	2,24
Discharge height m	0,54	0,55	0,55
Net weight kg	5.485	5.840	6.090
Maximum technical Load (max. @ 25 km/h) kg	3.500	4.000	4.500
PTO Drive	540	540	540
Number of auger knife positions	8	9	9
Number of knives mounted per auger	5	6	6
Power requirement HP (kW)	68 (50)	75 (55)	82 (60)
Tires (2 pcs.)	285/70 R 19.5	295/60 R 22.5	
Required hydraulic capacity	25 l/Min., 170 Bar		
Required tractor hydraulics	1x single-acting valve		



## TRIOMIX S1

### STANDARD FEATURES

- U-shaped cutting-loading system with fixed knives • 1 vertical Twin Stream mixing auger • Trioform auger knives • One restrictor blade • Wear ring • Wide-angle PTO shaft • Adjustable and reversible drawbar • Cross conveyor belt at the front
- Sealing brush at loading board • Two single (wide) wheels • Electric operation • Hydraulic brakes • Platform with stairs and viewing window

### OPTIONS

- Electronic weighing system • Reduction gearbox • Hydraulic restrictor blade • Hydraulic jack • Lighting (LED) • Speed regulation for cross conveyor belt • Pneumatic brakes • Long Life mixing auger • Adjustable conveyor belt for cross conveyor (right) • Magnet on auger wing

### TECHNICAL SPECIFICATIONS TRIOMIX S1

TYPE	800	1000	1200
Discharge		Cross conveyor belt at the front	
Capacity m <sup>3</sup>	8	10	12
Length m	4,98	5,16	5,16
Width m	2,45	2,65	2,65
Height m	2,76	2,76	3,07
Minimum clearance height m	2,66	2,66	2,95
Maximum cutting height m	2,9	2,9	3,7
Width outside wheels m	1,99	1,99	1,99
Width of cutting frame m	2,04	2,24	2,24
Discharge height m	0,55	0,55	0,55
Net weight kg	5.710	6.065	6.365
Maximum technical Load (max. @ 25 km/h) kg	3.750	3.750	4.500
PTO Drive	540	540	540
Number of auger knife positions	8	9	9
Number of knives mounted per auger	5	6	6
Power requirement HP (kW)	68 (50)	75 (55)	82 (60)
Tires (2 pcs.)	285/70 R 19.5	295/60 R 22.5	
Required hydraulic capacity		25 l/Min., 170 Bar	
Required tractor hydraulics		1x single-acting valve	

## TECHNICAL SPECIFICATIONS



# TRIOMIX 2 / TRIOMIX S2

## STANDARD FEATURES

- U-shaped cutting-loading system with hydraulically driven cutting knives or with fixed cutting knives (S)
- 1 vertical Twin Stream mixing auger
- Trioform auger knives
- One restrictor blade
- Wear ring
- Wide-angle PTO shaft
- Adjustable and reversible drawbar for upper or lower hitch
- Cross conveyor belt at the front
- Sealing brush at loading board
- Two single (wide) wheels
- Electric operation
- Hydraulic brakes
- Platform with stairs and viewing window

## OPTIONS

- Electronic weighing system
- Reduction gearbox
- Hydraulic restrictor blade
- Hydraulic jack
- Lighting (LED)
- Speed regulation for cross conveyor belt
- Pneumatic brakes
- Long Life mixing auger
- Adjustable conveyor belt for cross conveyor (right)
- Magnet on auger wing
- Shifttronic 2-speed reduction gearbox
- Tandem axle for 1400 and 1800

## TECHNICAL SPECIFICATIONS TRIOMIX 2 AND TRIOMIX S2

TYPE	1400	1800	2200
Discharge	Cross conveyor belt at the front or rear, or side discharge doors on the left and right at the front		
Capacity m <sup>3</sup>	14	18	22
Length m	6,89	7,39	7,39
Width m	2,45	2,45	2,65
Height m	2,98	2,98	3,28
Minimum clearance height m	2,80	2,80	3,20
Maximum cutting height m	4,00	4,00	4,00
Width outside wheels m	1,93	2,14	2,16
Width of cutting frame m	1,93	2,13	2,13
Discharge height of conveyor belt m	1,00	1,00	1,00
PTO Drive	540	540	540
Number of auger knife positions	10	11	12
Number of knives mounted per auger	5	5	6
Power requirement HP (kW)	82 (60)	102 (75)	105 (77)
Tires	435/50 R 19.5 (2x)	455/40 R22.5 (2x)	435/50 R 19.5 (4x)
Required hydraulic capacity	30//min., 180 bar		
Required tractor hydraulics	1x single-acting valve		

## TECHNICAL SPECIFICATIONS



# GIGANT

### STANDARD FEATURES

- One vertical Twin Stream mixing auger • Trioform auger knives • U-shaped cutting-loading system (Type Blade) or fixed cutting head with spring-loaded anti-spill plate (Type 500 Kam) • Wide-angle PTO shaft • Height-adjustable drawbar for upper hitch (Gigant 500) • Fixed drawbar for upper hitch (Gigant 700 and 900) • Hydraulic side discharge doors on both sides with steel door covers • Two wheels • Electric operation • Hydraulic brakes (type 700 and 900) • Viewing window in the mixing tub

### OPTIONS

- Electronic weighing system • Hydraulic weighing system • Hydraulic jack • Lighting (LED) • Rubber protection on side discharge doors • Pneumatic brakes • Magnet on auger wing • Long Life mixing auger

### TECHNICAL SPECIFICATIONS GIGANT

TYPE	GIGANT 500	GIGANT 700	GIGANT 900
Discharge	2 side discharge doors		
Capacity m <sup>3</sup>	5	7	9
Length m	3,99	4,74	4,94
Width m	2,14	2,28	2,48
Height in lifted position m	2,41	2,61	2,75
Minimum clearance height m	2,25	2,37	2,56
Width outside wheels m	1,92	2,13	2,19
Maximum cutting height* m	3,5	3,9	4,3
Width of cutting frame m	1,23	1,23	1,23
Maximum cutting depth m	0,45	0,5	0,5
Discharge height m	0,55	0,7	0,7
Net weight kg	2.500	3.500	3.750
Maximum technical Load (max. @ 25 km/h) kg	2.000	2.500	2.750
PTO Drive	540	540	540
Number of auger knife positions	5	6	6
PTO power HP (kW)	48 (35)	62 (45)	68 (50)
Tires (2 pcs.)	6.50-10 10.0	10.0/75-15.3	
Required hydraulic capacity	25 l/Min., 170 Bar		
Required tractor hydraulics	1x single-acting valve		

\* In fully lifted position



## VERTIFEED

### STANDARD FEATURES

- One Twin Stream mixing auger • Hydraulic loading frame • Electric operation • One restrictor blade • Sealing brush on the loading frame • Trioform auger knives • Wear ring • Platform with stairs and viewing window • Hydraulic brakes • Wide-angle PTO shaft • Cross conveyor belt at the front • Two single wheels • Adjustable and reversible drawbar

### OPTIONS

- Electronic weighing system • Reduction gearbox • Hydraulic restrictor blade • Hydraulic jack • Adjustable conveyor belt extension (right) • Magnet on the auger wing

### TECHNICAL SPECIFICATIONS VERTIFEED

TYPE	VERTIFEED
Discharge	Cross conveyor belt at the front
Capacity m <sup>3</sup>	12
Length m	5,28
Width m	2,47
Height m	2,94
Width outside wheels m	1,99
Discharge height m	0,55
Net weight kg	4.750
Maximum technical Load (max. @ 25 km/h) kg	4.500
PTO Drive	540
Number of auger knife positions	10
Number of knives mounted	7
Power requirement PTO HP (kW)	82 (60)
Width of loading frame m	2,2
Discharge height with belt extension m	0,74
Width of cross conveyor belt m	0,75
Tires (2 pcs.)	295/60 R 22.5
Required hydraulic capacity	25 l/Min., 170 Bar
Required tractor hydraulics	1x single-acting valve



**TRIOLIET.COM**

Trioliet. Invents for you.

**TRIOLIET BV**

Kleibultweg 59

NL-7575 BW Oldenzaal

The Netherlands

T +31 541 – 57 21 21

info@trioliet.com